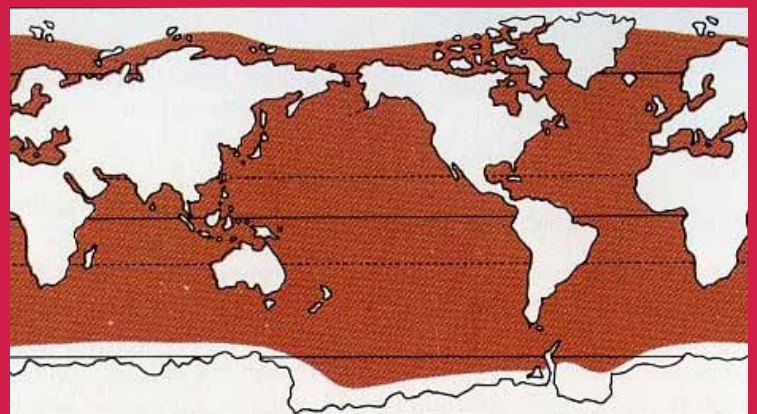
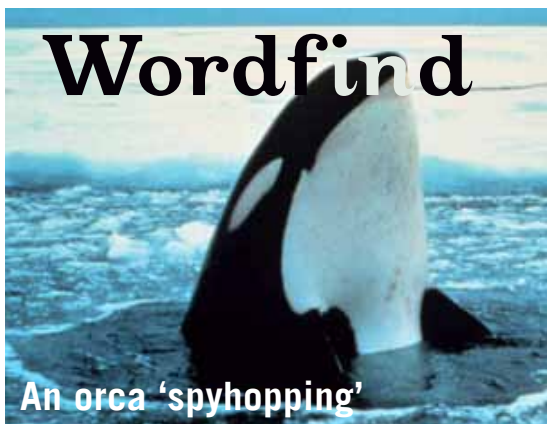
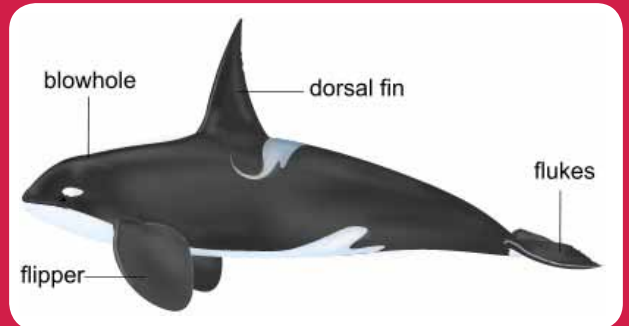


Orca (killer whale)

The Orca is the largest member of the dolphin family. They are about 2.4 metres long at birth. Females grow to 8.2 metres and males grow to 9.4 metres. They are black and white and have a large dorsal fin. The dorsal fin is much larger in males than in females. They are fast swimmers and can travel up to 55km/h.

They live in mixed family groups called pods. Members of these pods usually stay together for life and develop communication unique to their group. Several pods may get together for social gatherings.

They are formidable hunters and resemble the predatory skill of the great white shark. They eat turtles, seals, fish, young whales, dolphins and seabirds. They have been known to try and eat animals as large as the Blue Whale. They live in tropical, temperate, and polar waters. They are seen more often in cooler waters and usually within 800km of the shoreline.

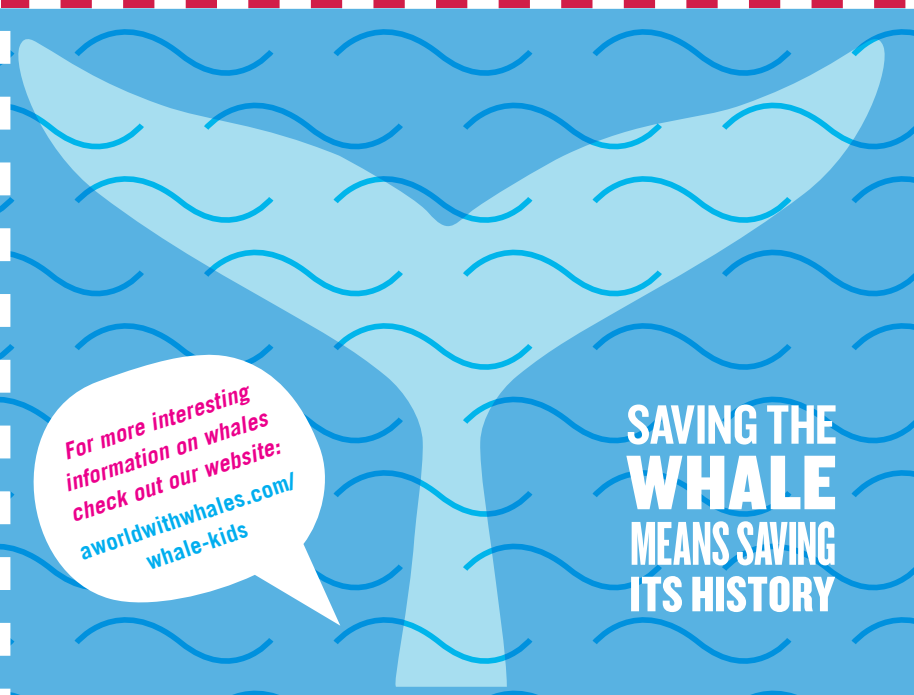


Orca can be found both in tropical and polar oceans.

See if you can find the following words in our orca wordfind!

- | | | |
|----------|----------|-----------|
| ORCA | SEAL | DORSALFIN |
| DOLPHIN | SEABIRD | FEMALE |
| POD | TROPICAL | PREY |
| PREDATOR | POLAR | |

J P O D L N H N S F M
 E D X Q Y O R C A P B
 M E L A M E F Q N R D
 U X F R M J G L I E O
 P H J Z S D D A F D L
 I Y K C L P R C L A P
 R W N A N F I I A T H
 D A E X P L B P S O I
 N S L R E F A O R R N
 A P E O E O E R O O A
 P Y U Q P S S T D Q I



For more interesting information on whales check out our website: aworldwithwhales.com/whale-kids

SAVING THE WHALE MEANS SAVING ITS HISTORY